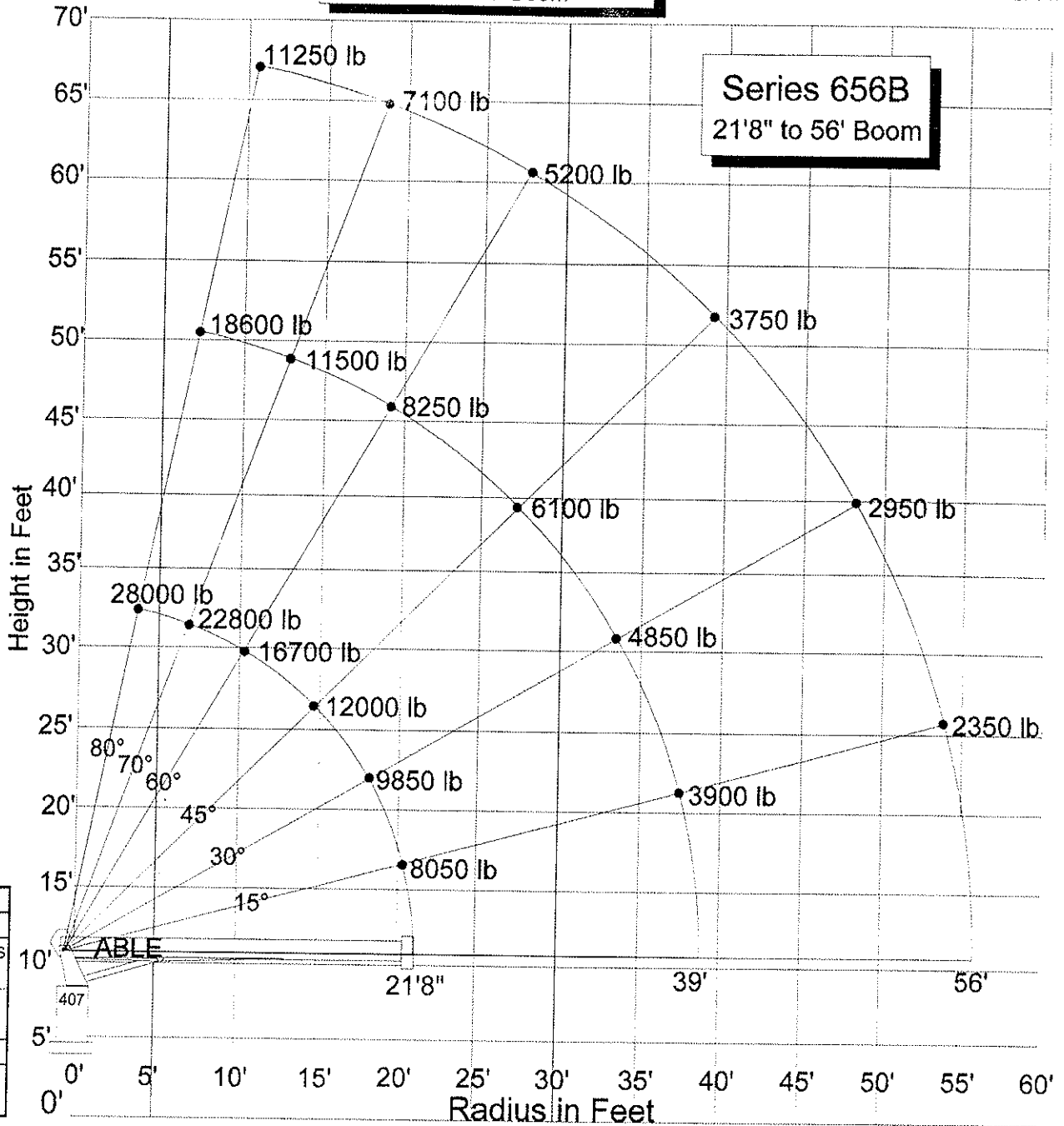


Warning! This chart is only a guide! The individual crane's load chart, operating instructions, and other instruction plates must be read and understood prior to crane operation.

14 ton National¹

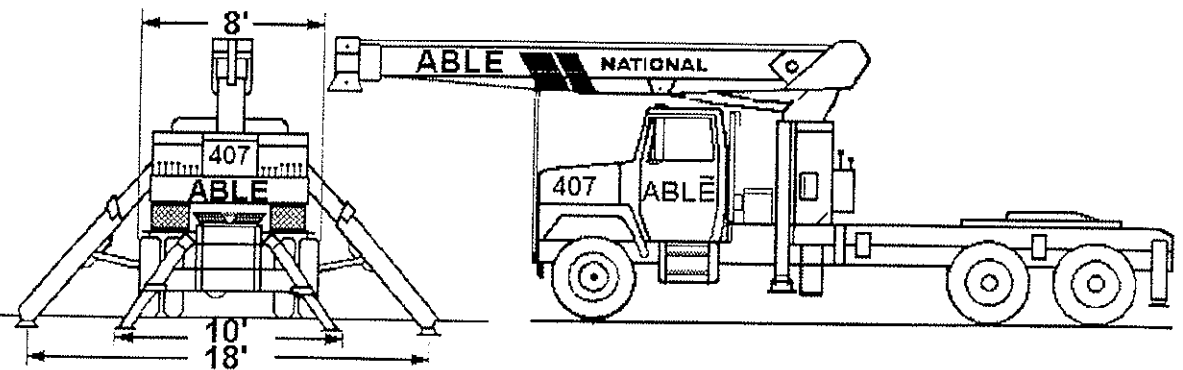
21'8" - 56' Boom

Able Movers Ltd. 204 237-1800
1-800-667-**Able**
Brandon Crane 204 727-3407



Standard Rigging	
Wire Rope Slings:	
4 pc 13' x 1/2" ov hooks	
2 pc 10' x 5/8"	
4 pc 10' x 1/2"	
4 pc 6' x 3/8"	
Shackles:	
4 pc 8 1/2 ton	
4 pc 4 3/4 ton	

Dimensions:	
Weight: Steering-	18,000lb: 8228kg
Drives-	16,400lb: 7430kg
Length: over all-	36' 9" 11.20m
Front Projection-	9' 5" 2.87m
Bumper to Bumper-	27' 4" 8.33m
Width: Travel-	8' 0" 2.44m
On pads-	19' 6" 5.95m



At 204 237-4800 Arnold freely delivers
ndisput**Able** advice (er spricht auch Deutsch).

©2011 Nov 25 g collins (2011) 189-4334. All rights reserved.
¹National is a registered trademark of National Crane, Waverly, NE

Series 656B
Able #407 14 ton National¹